

H

humane

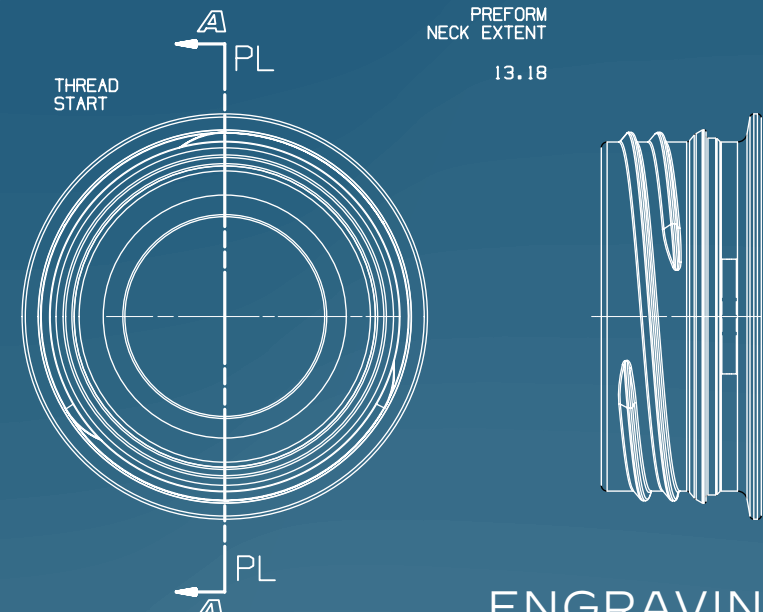
P L Á S T I C O S

CATÁLOGO 2024

H

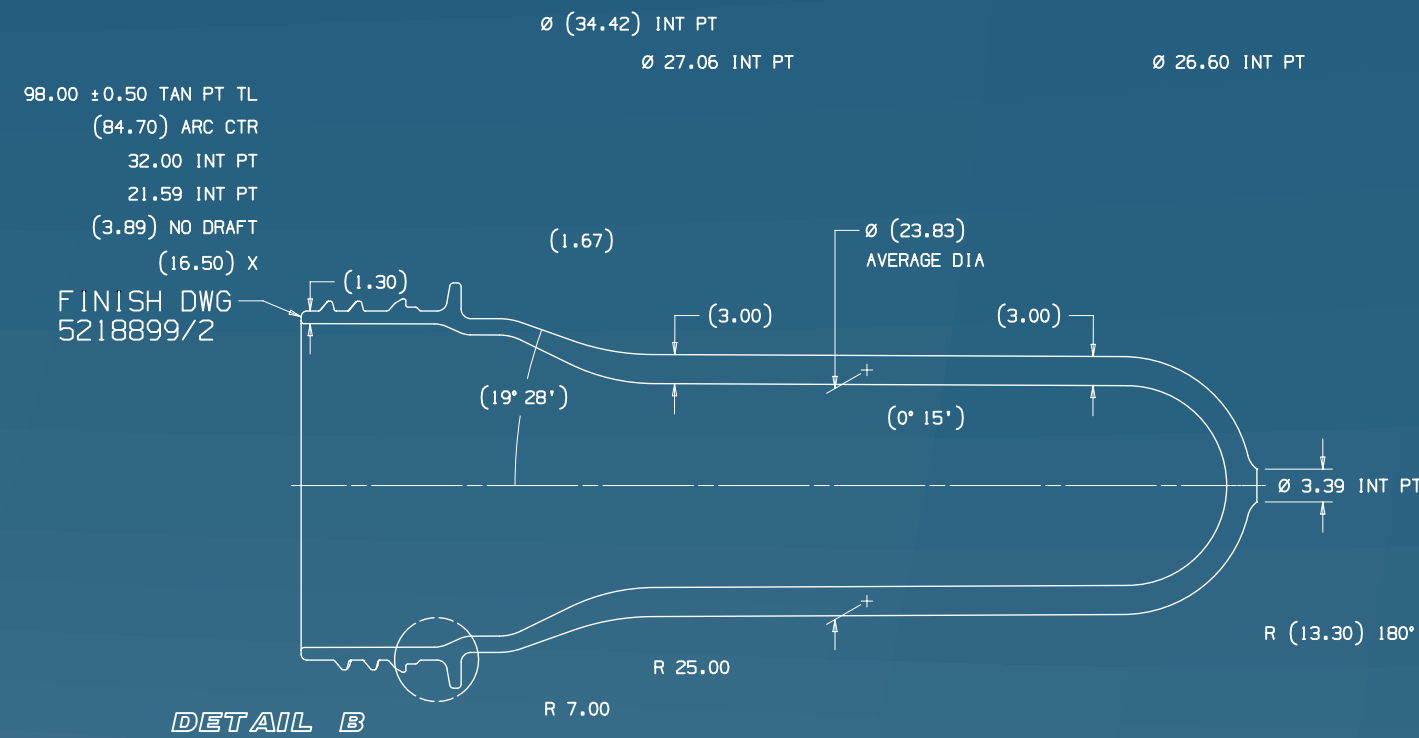
HUMANE ES UNA EMPRESA DEDICADA AL DESARROLLO Y FABRICACIÓN DE PLÁSTICOS; ASÍ COMO EL DISEÑO, PRODUCCIÓN Y COMERCIALIZACIÓN DE MOLDES DE LA MÁS ALTA CALIDAD, REALIZADOS CON UNA TECNOLOGÍA ÚNICA EN MÉXICO.

NOS PREOCUPAMOS POR EL MEDIO AMBIENTE Y NUESTRO ENTORNO, POR ELLO LOS MATERIALES QUE USAMOS EN HUMANE SON 100% RECICLABLES.



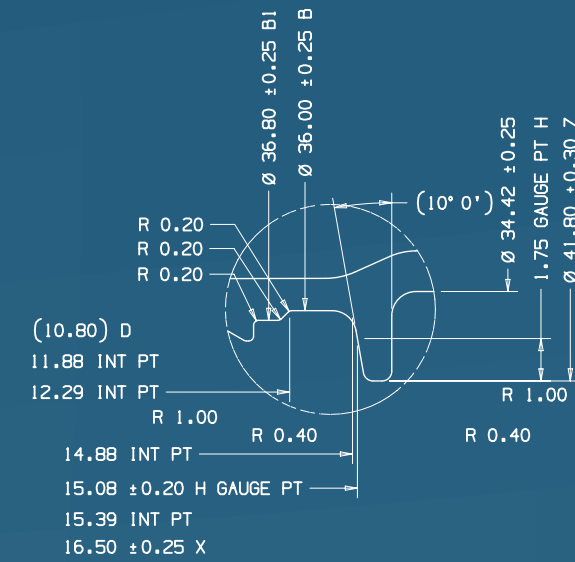
TOP VIEW
SCALE 2:1

ENGRAVING
VIEW
SIDE B
(NON-OPERATOR)
SCALE 2:1



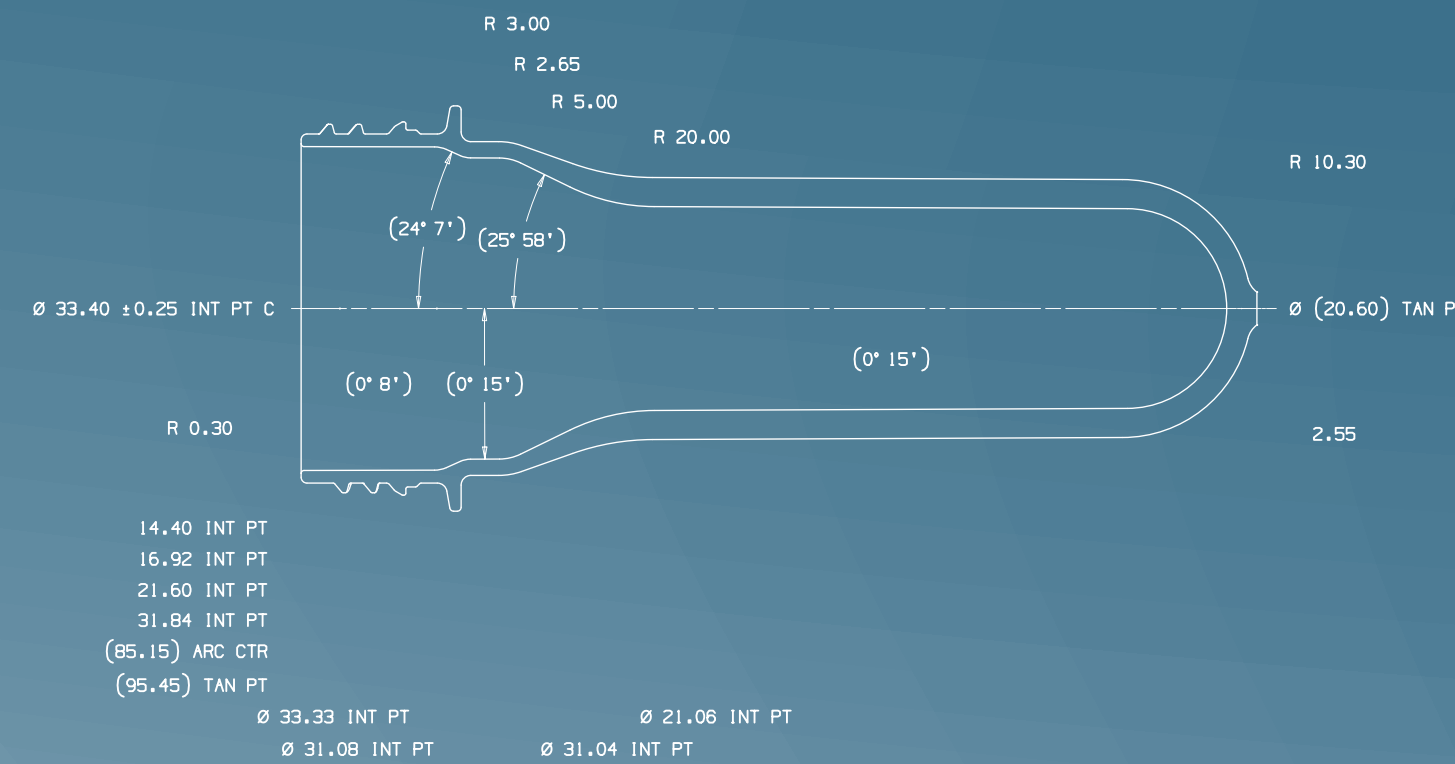
SECTION A'A
GRAVITY SIDE DIMENSIONS
SCALE 2:1

MULTI-LAYER SPECIFICATIONS	
FOR FURTHER INFORMATION PLEASE REFER TO HS 784	
FULL COVERAGE ZONE FC (MEASURED FROM 155)	16.0 mm
CLOSED DOME LAYER	CORE BIASED



DETAIL B
SCALE 5:1

PROJECT	232555	SIDE B:	X-P01-01 To X-P01-24
MAIN PROJ.	XXXXXX	SIDE B1:	X-P01-25 To X-P01-26
PROJ. ENG.	P-LANNANTUONG	ENGRAVING SEQUENCE	
MOLDING SURFACE ENGRAVING DATA:			
POSITION: AS SHOWN ON MOLDING SURFACE DETAILS:			
SIZE: 1.50 HIGH X 0.10 DEEP			
STYLE: ARIAL BOLD SHOWN POSITIVE ON PLASTIC			



SECTION A'A
CORE SIDE DIMENSIONS
SCALE 2:1

* # CUSTOMER LOGO		PLEASE PRINT NAME	
LOGO # : 131	LOGO HEIGHT	CUSTOMER APPROVAL	SIGNATURE
LOGO HEIGHT AND DEPTH REFER TO ENGRAVING DATA SHOWN POSITIVE ON PLASTIC POSITION: CENTER		DATE	
<p>HUMBY INJECTION MOLDING SYSTEMS LTD. OR ITS AFFILIATES COLLECTIVELY HEREBY DISCLAIM ANY WARRANTIES, ACCURACY OR COMPLETENESS OF THIS DRAWING OR ITS CONTENTS INCLUDING DIMENSIONS AND TOLERANCES, THE DRAWING AND DIMENSIONS, INCLUDING LIABILITY FOR ANY ERRORS IN, OMISSIONS TO, OR RELIANCE ON THE DRAWING.</p> <p>ALL IMPLIED, EXPRESSED, OR STATUTORY WARRANTIES AND REPRESENTATIONS OF ANY KIND ARE HEREBY TO THE DRAWING ARE DISCLAIMED, INCLUDING BUT NOT LIMITED TO THE WARRANTIES OF (1) NON-INFRINGEMENT OF THIRD PARTY INTELLECTUAL PROPERTY RIGHTS OF THE DRAWING OR PRODUCTS PRODUCED FROM THE DRAWING, OR THE DRAWING OR PRODUCTS PRODUCED IN CONNECTION WITH THE DRAWING, OR (2) FITNESS FOR A PARTICULAR PURPOSE.</p> <p>IN NO EVENT WILL HUMBY, ITS AGENTS OR EMPLOYEES, BE LIABLE FOR ANY DAMAGES, CLAIMS, ACTIONS, COSTS, REASONABLE ATTORNEY FEES OR OTHER EXPENSES, INCLUDING LEGAL FEES AND CHARGES, ARISING OUT OF OR IN ANY WAY CONNECTED WITH (1) THE USE OF OR INABILITY TO USE THE DRAWING OR ANY PARTS, (2) ANY ERROR, OMISSION, OR DEFECT IN THE DRAWING OR PRODUCTS PRODUCED FROM THE DRAWING, (3) ANY PERSONAL OR BUSINESS INFORMATION, OR OTHER INFORMATION, OR ANY USE OF THE DRAWING OR PRODUCTS PRODUCED FROM THE DRAWING, OR (4) ANY ALLEGATION THAT THE DRAWING PROVIDED HEREIN ALONE, OR PRODUCTS PRODUCED BASED ON THE DRAWING OR THE DRAWING OR PRODUCTS PRODUCED IN CONNECTION WITH ANOTHER DESIGN, DEVICE, OR PROCESS, INFRINGES UPON ANY PATENTS, COPYRIGHTS, TRADEMARKS, TRADE SECRETS, TRADE SECRET RIGHTS OR OTHER PROPRIETARY RIGHTS OF A THIRD PARTY.</p> <p>CERTAIN DETAILS ON THESE DRAWINGS (SUCH AS, BUT NOT LIMITED TO, SPLIT LINE, DIMENSION LINES, DIMENSION VALUES AND DIMENSION LINES) ARE SUBJECT TO CHANGE FOR OTHER MOLDING CONFIGURATIONS. FOR PRODUCTION MOLDS, THESE DIMENSIONS AND TOLERANCES ARE SUBJECT TO CHANGE WHEN CONVERTED TO PRODUCTION DRAWING.</p> <p>HUMBY RESERVES THE RIGHT TO MODIFY THE DRAWINGS UP TO AND INCLUDING THE FINALIZATION OF THE PRODUCTION DRAWINGS.</p>			
DIMENSIONS SHOWN ON THE DRAWING ARE PLASTIC SIZES.			
ALLOWABLE DEVIATIONS ON UNTOLERANCED DIMENSIONS (DIN 1800/REHE 130).			
FOR STACK COMPONENTS THAT ARE BEING REMOVED OR REUSED, THE DIMENSIONS ARE A RESULT OF EXISTING STEEL, AND THE TOLERANCES SHOWN ARE FOR REFERENCE ONLY.			
PRODUCT DATA			
ESTIMATED SHRINKAGE	HUMANE STANDARD		
ESTIMATED PART WEIGHT	27.72 ± 0.30 gr (HUMBY EST)		
ESTIMATED NECK WEIGHT	4.51 gr (HUMBY EST)		
SPECIFIC GRAVITY	1.335 g/cm ³		
NEUTRAL AXIS HALF-LENGTH	87.83 mm		
COMPONENT VOLUME	1000 - 1499ml		
ESTIMATED PART TOTAL AREA	17499 mm ² (HUMBY EST)		
CUSTOMER REF. DRAWING NO.	BODY# N/A THREAD# N/A		
MATERIAL	PET		
METRIC	HUMANE		
TITLE	Preform Plastic Size		
SCALE AS SHOWN	SIZE	DRAWING	REV
SHEET 1 OF 2	A1	10970487	1

REV	DATE	DESCRIPTION	NAME
1	2021-10-01	ADDED ENGRAVING, NO GEOMETRY CHANGES.	DRWIN J. ZHONG
0	2021-09-03	ORIGINAL ISSUE - DESIGNED BY J.PATEL	DRWIN J. ZHONG



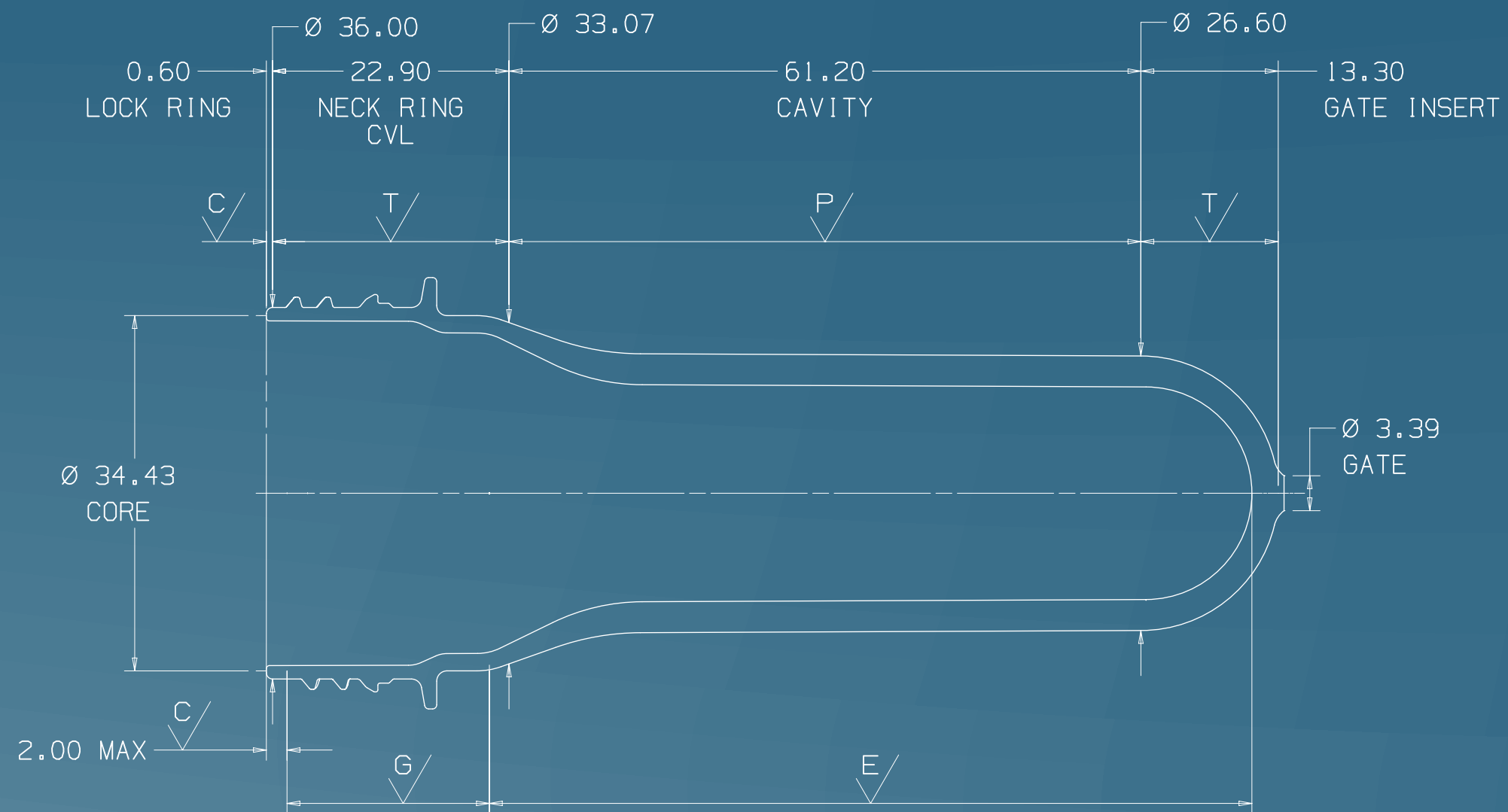
USED SURFACE FINISHES

- \sqrt{C} = 0.3 GRIND OR HARD TURN
- \sqrt{P} = 0.25 / 0.15 B120 VAPOURHONE AND BUFF
- \sqrt{T} = MACHINE AND B120 VAPOURHONE

- \sqrt{E} = 240 DRAWSTONE
- \sqrt{G} = 240 DRAWSTONE AND DRAWPOLISH

REV	1
DRAWING	10970487

GRAVITY SIDE



CORE SIDE
SECTION A'A
SURFACE FINISHES
AND SPLITLINES

SCALE 2:1

REV	DATE	DESCRIPTION	NAME
1	2021-10-01	ADDED ENGRAVING, NO GEOMETRY CHANGES.	DRWN: J.ZHONG CHKD: J.ZHONG
0	2021-09-03	ORIGINAL ISSUE - DESIGNED BY: J.PATEL INO-098158	DRWN: J.PATEL CHKD: J.PATEL

METRIC	HUMANE		
<small>THIS DRAWING AND INFORMATION CONTAINED WITHIN IS CONFIDENTIAL AND/OR PROPRIETARY TO HUSKY INJECTION WELDING SYSTEMS LTD. OR ONE OF ITS SUBSIDIARIES ("HUSKY") AND MAY NOT BE COPIED, DISCLOSED OR USED, IN WHOLE OR IN PART, WITHOUT THE PRIOR WRITTEN CONSENT OF HUSKY.</small>			
<small>NO INTELLECTUAL PROPERTY RIGHTS ARE GRANTED INCLUDING ANY LICENSE IMPLIED OR OTHERWISE.</small>			
SCALE AS SHOWN	SIZE	DRAWING	REV
SHEET 2 OF 2	A2	10970487	1

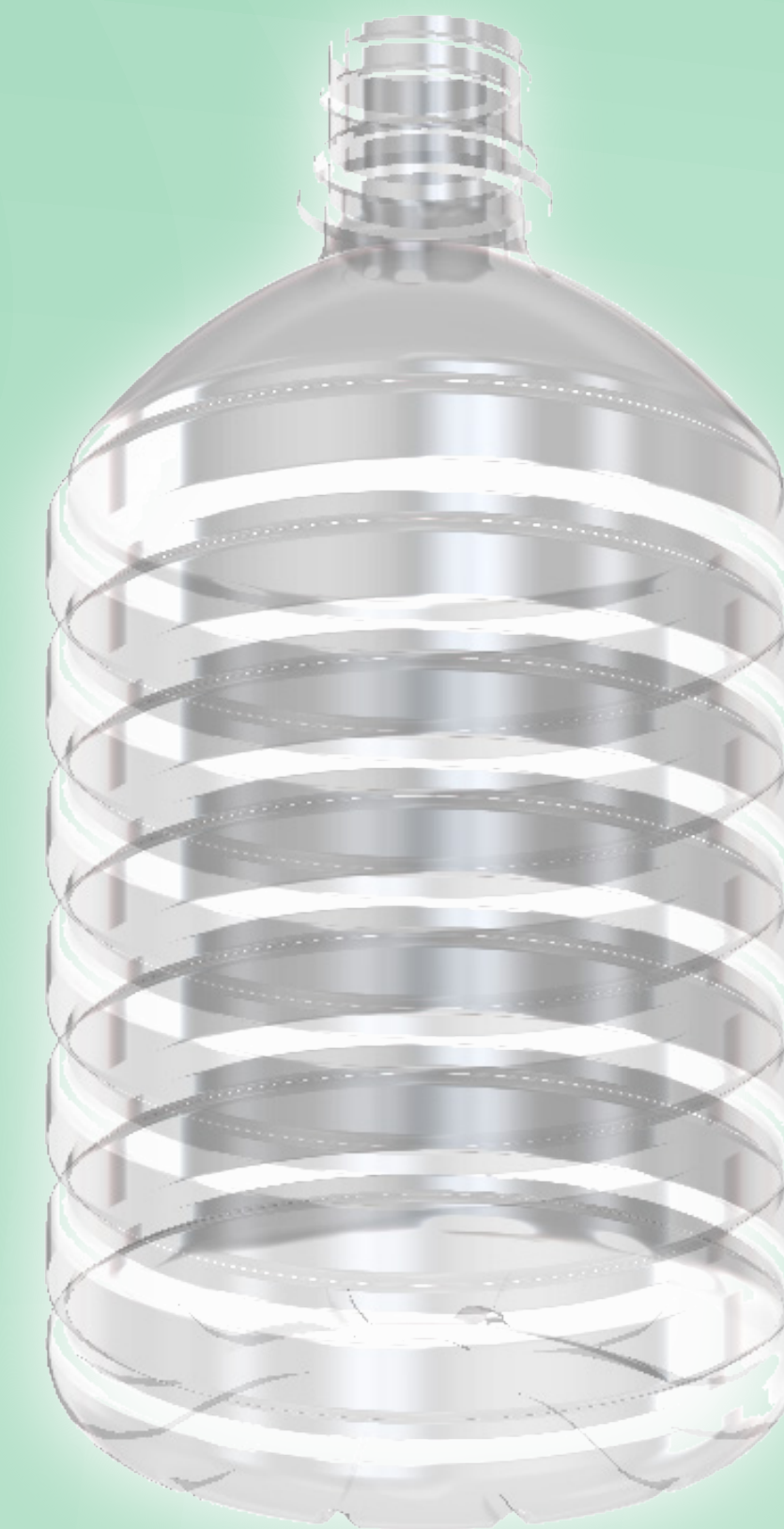
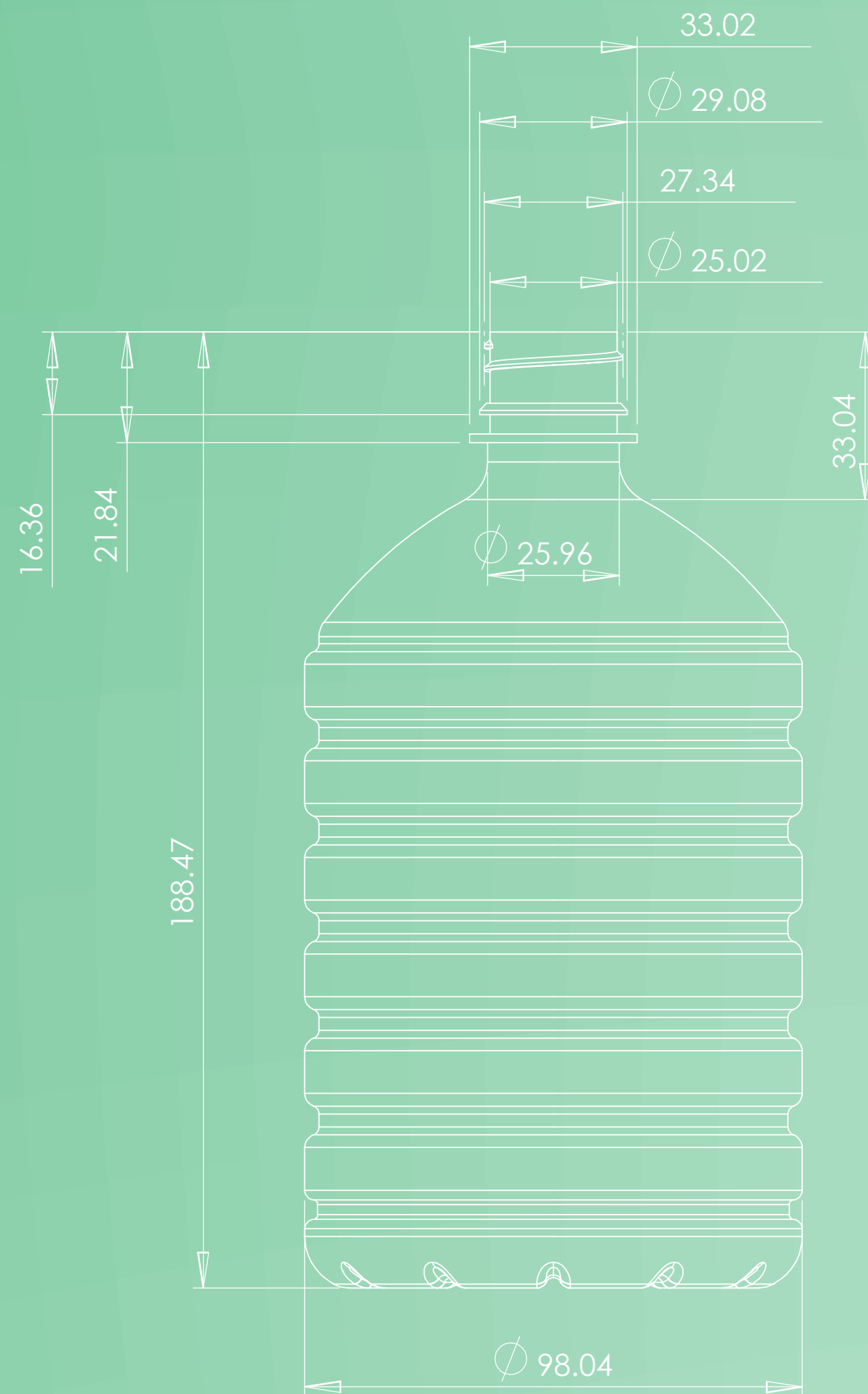
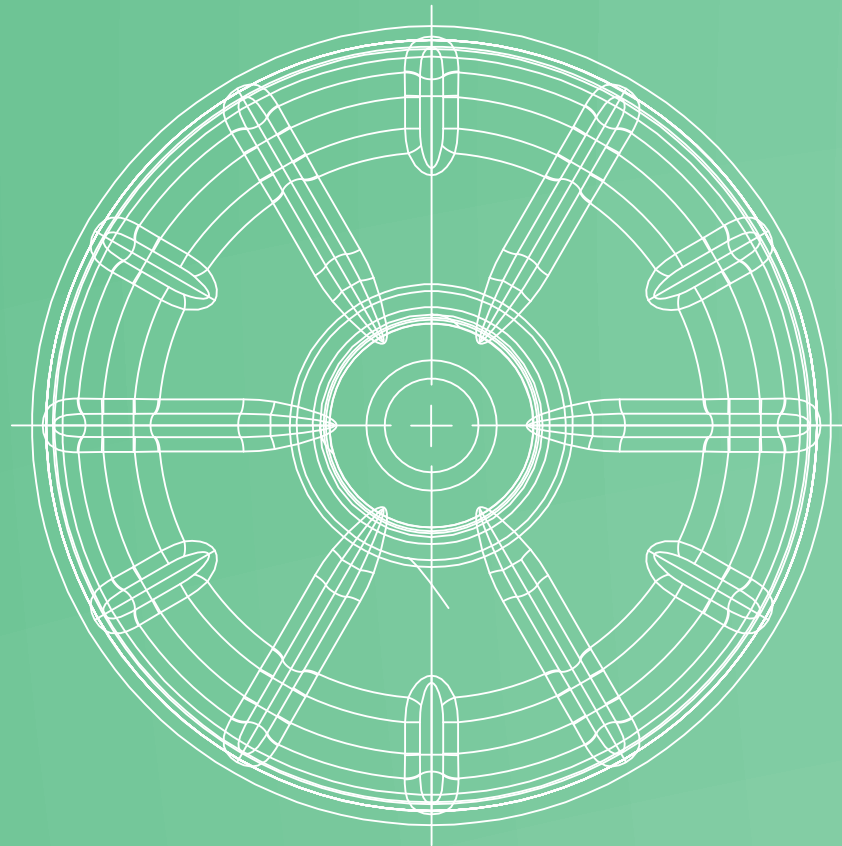




BOTELLA PIÑA
960ML.

FICHA TÉCNICA

BOTELLA PET	960 ml.
TIPO DE CUELLO	LARGO 28 mm.
MATERIAL	PET

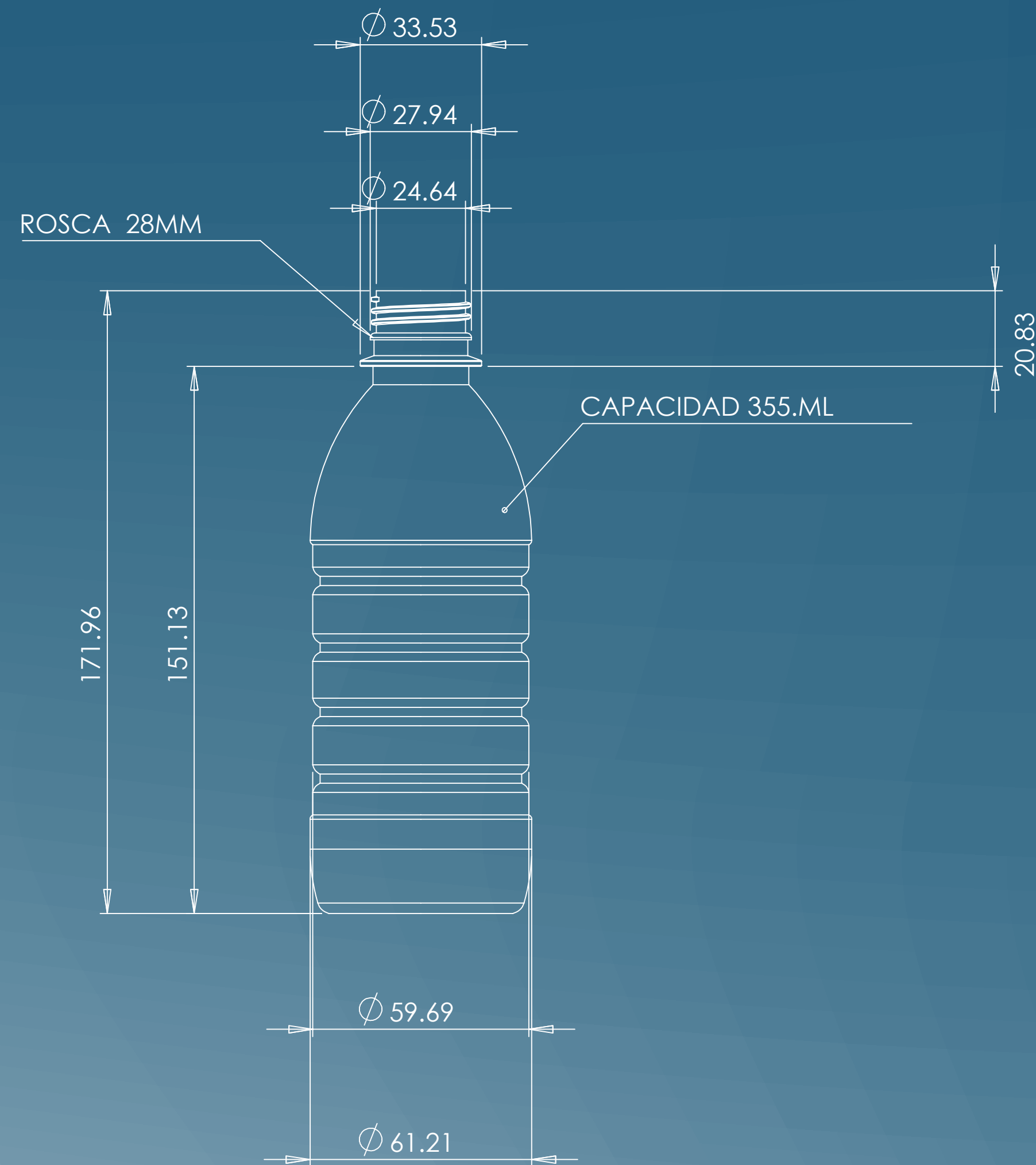
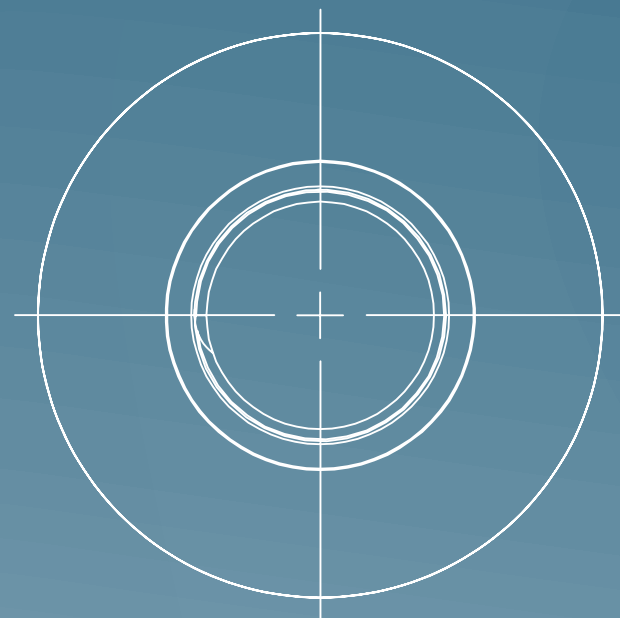




BOTELLA SALSA
GENÉRICA 355ML.

FICHA TÉCNICA

BOTELLA GEN	355 ml.
TIPO CUELLO	LARGO
ROSCA	28 mm.
MATERIAL	PET

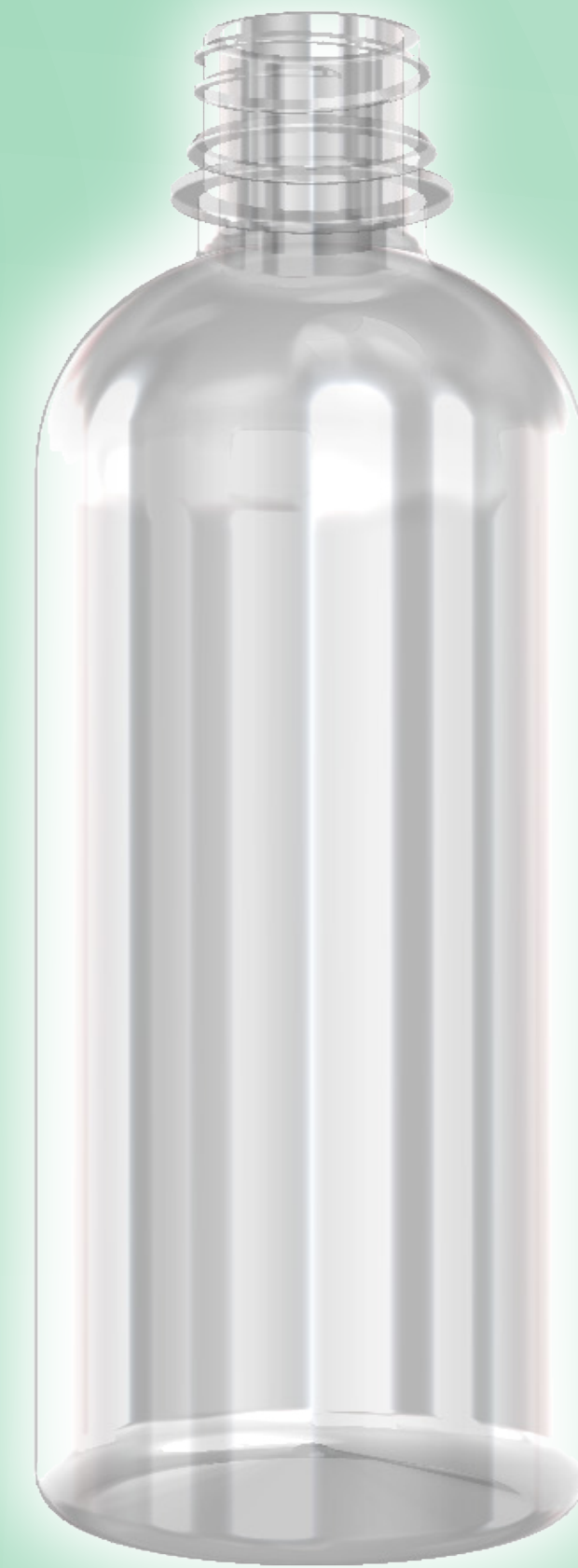
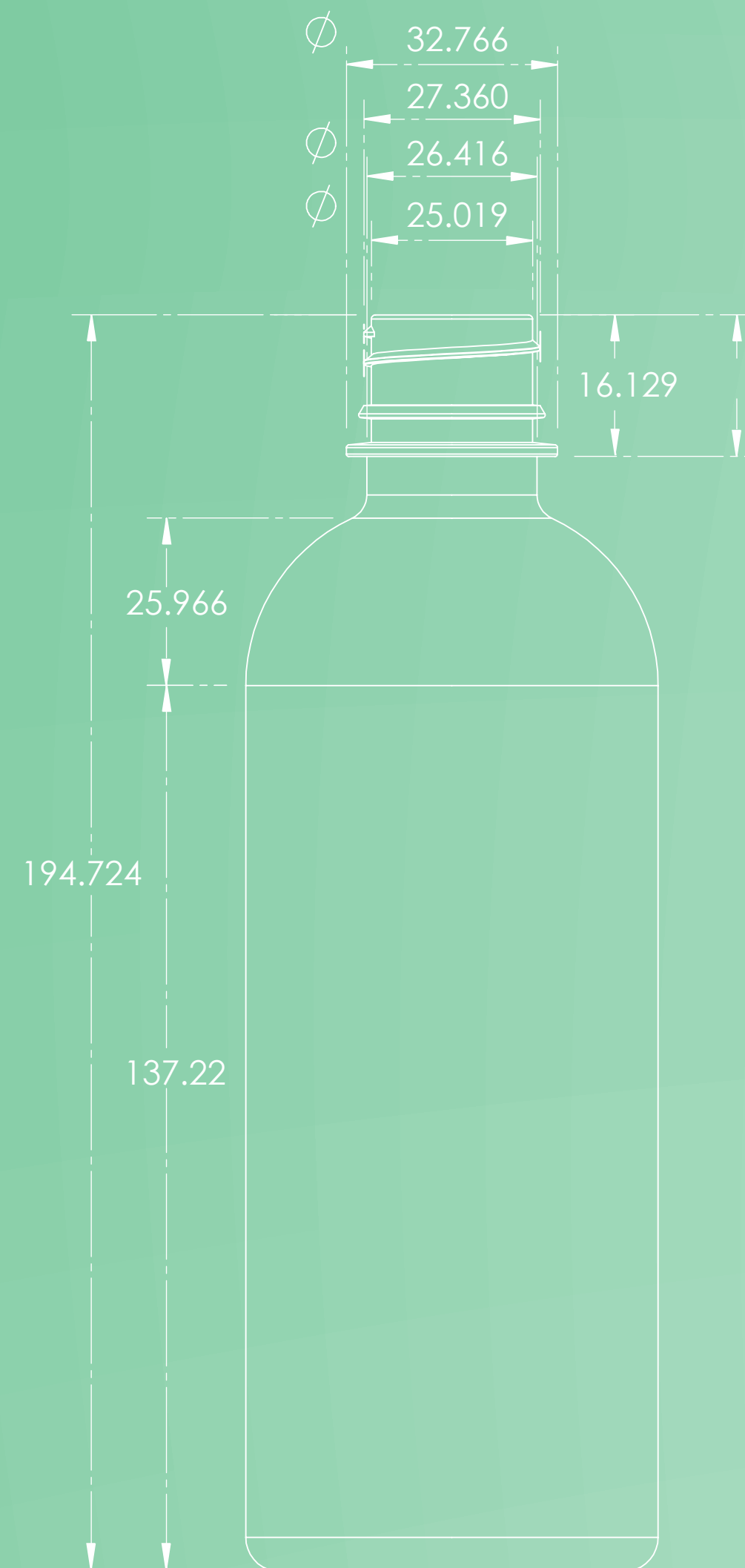
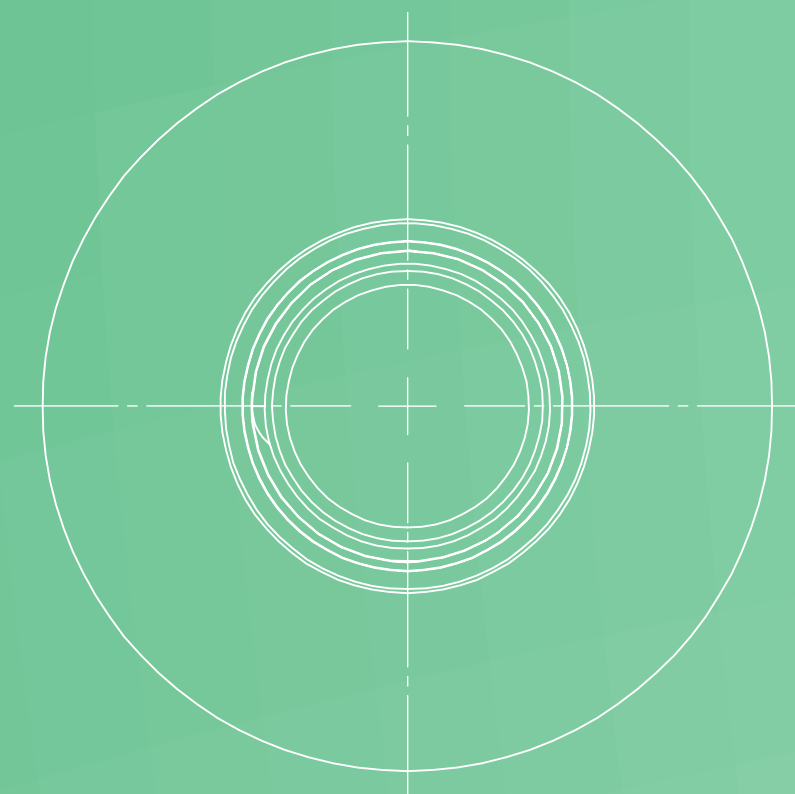




BOTELLA BOSTON
500ML.

FICHA TÉCNICA

BOTELLA BOSTON	500 ml.
TIPO CUELLO	LARGO
ROSCA	28 mm.
MATERIAL	PET



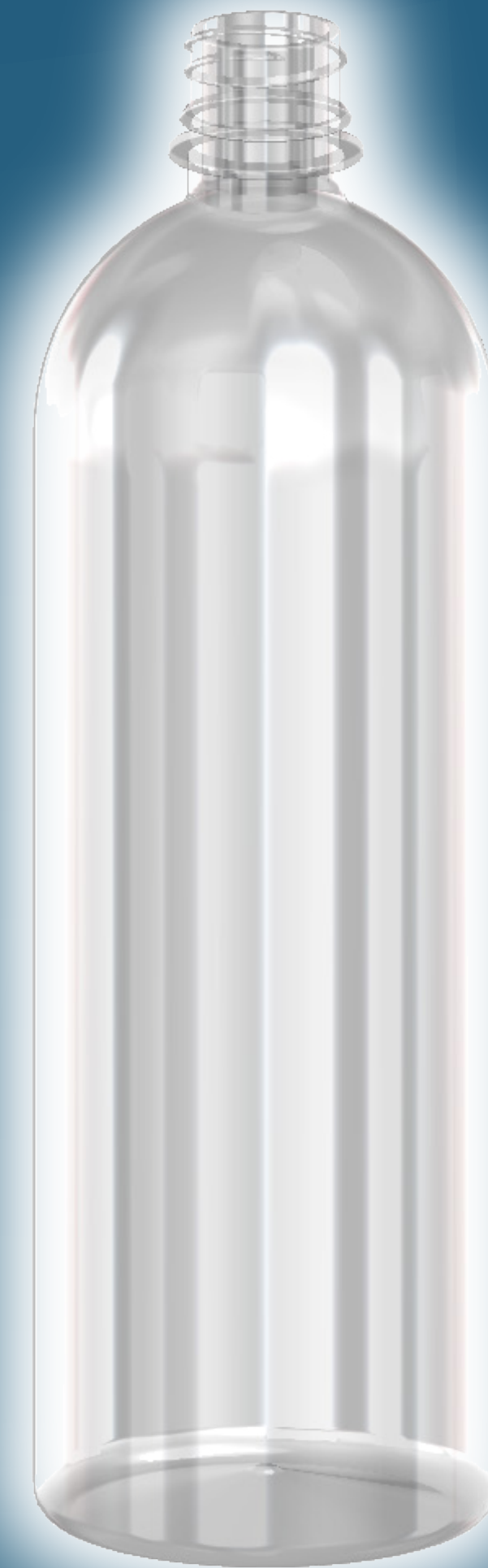
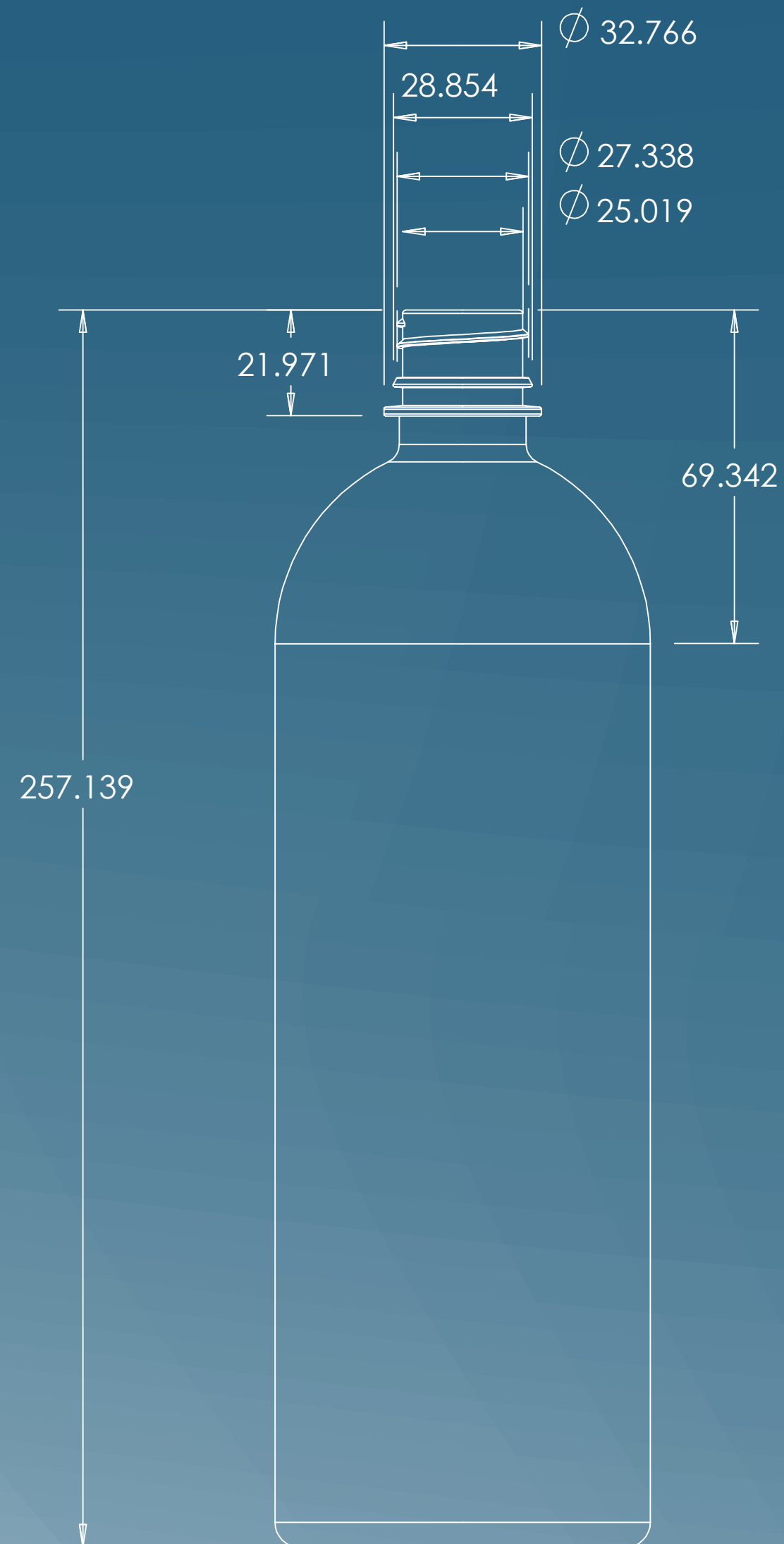
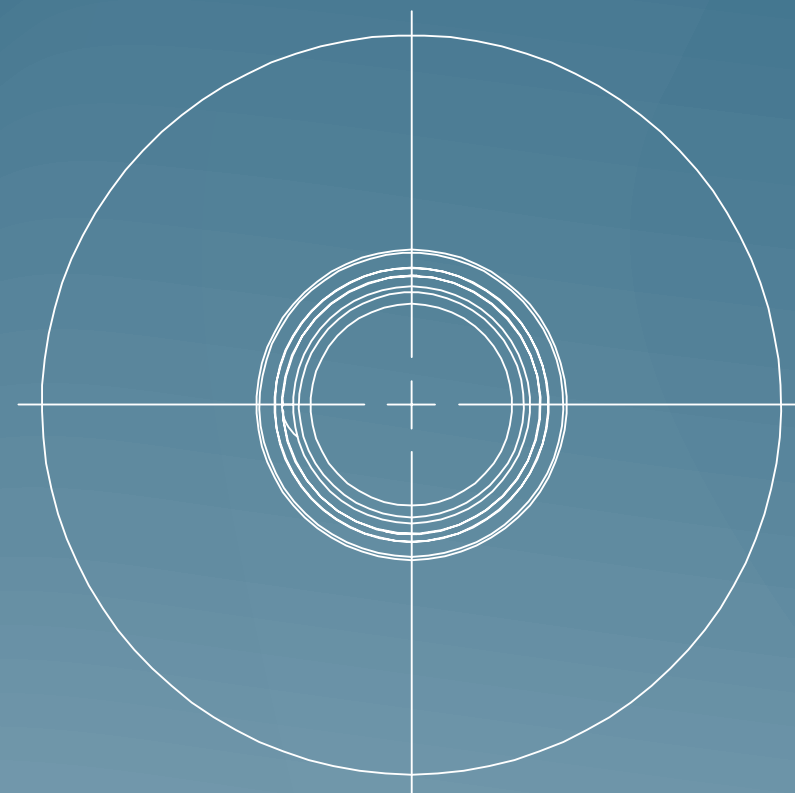


BOTELLA BOSTON

1 L.

FICHA TÉCNICA

BOTELLA BOSTON	1 L.
TIPO CUELLO	LARGO
ROSCA	28 mm.
MATERIAL	PET

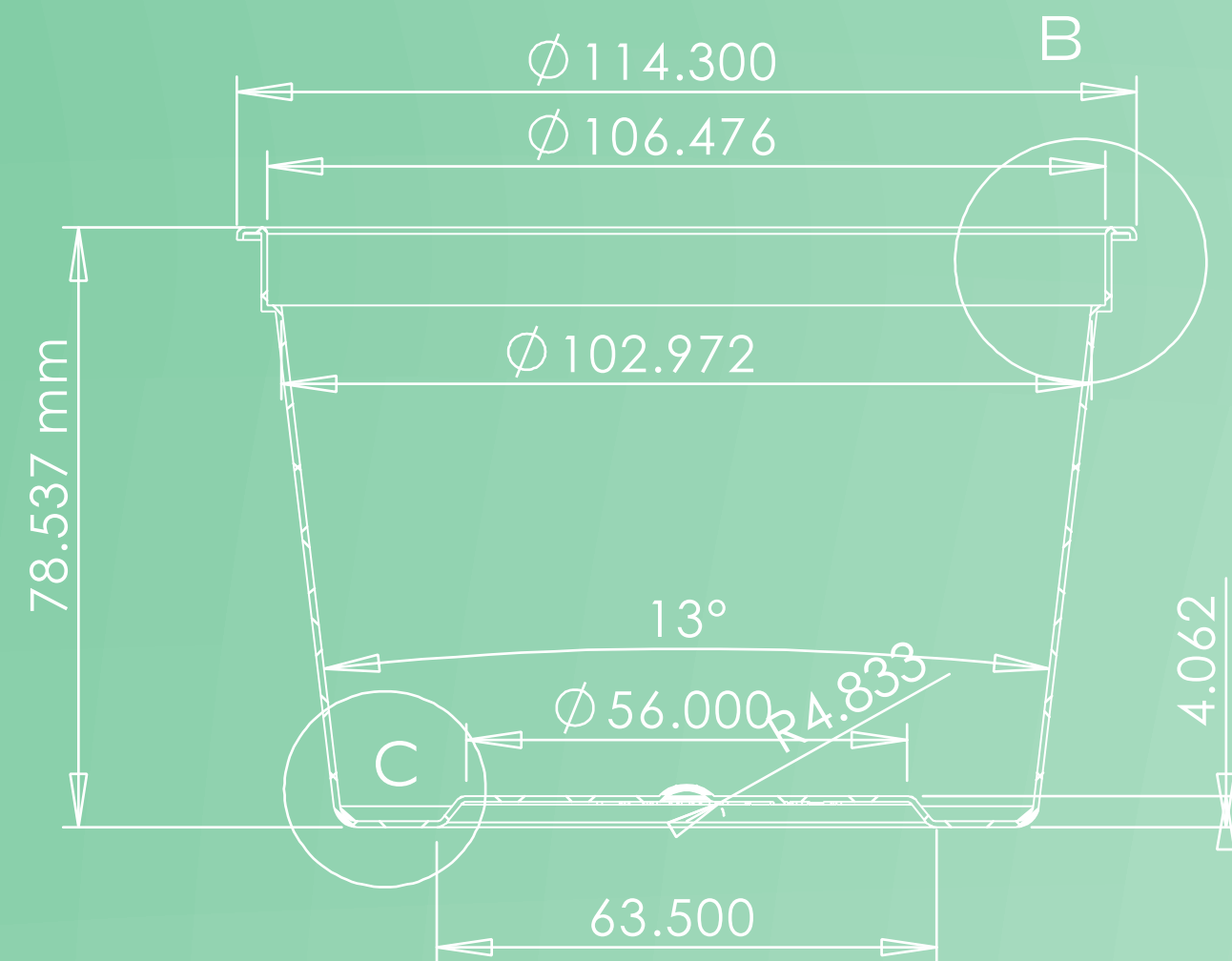




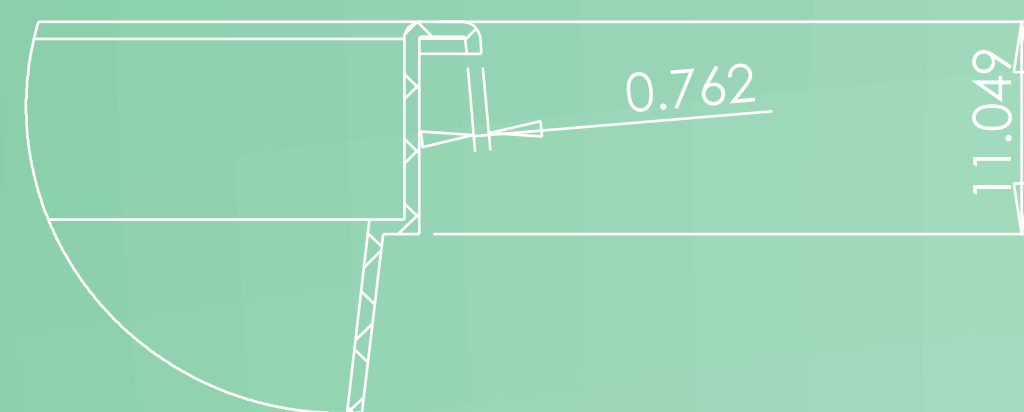
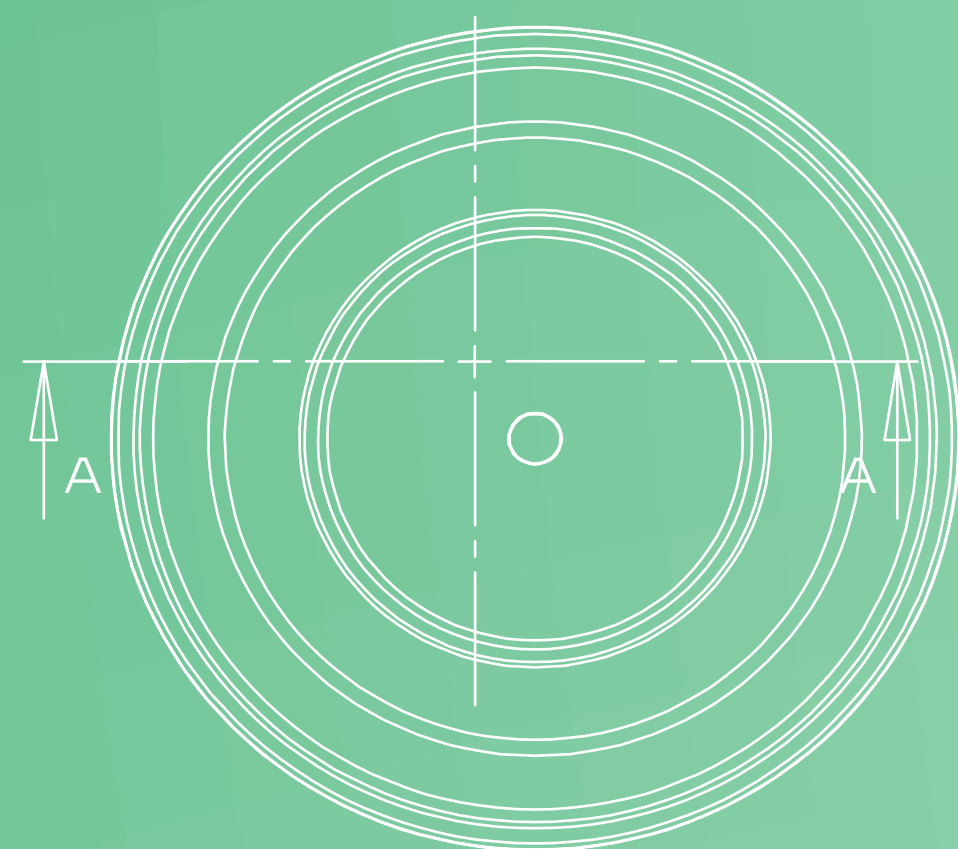
CONTENEDOR MEDIO PLANO CON SOBRE TAPA 500GR.

FICHA TÉCNICA

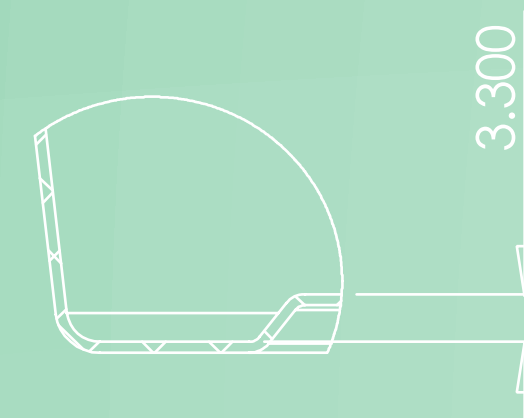
CONTENEDOR PET	500 ml.
MATERIAL	PET



SECCIÓN A-A



DETALLE B
ESCALA 2 : 1.5



DETALLE C
ESCALA 1 : 1

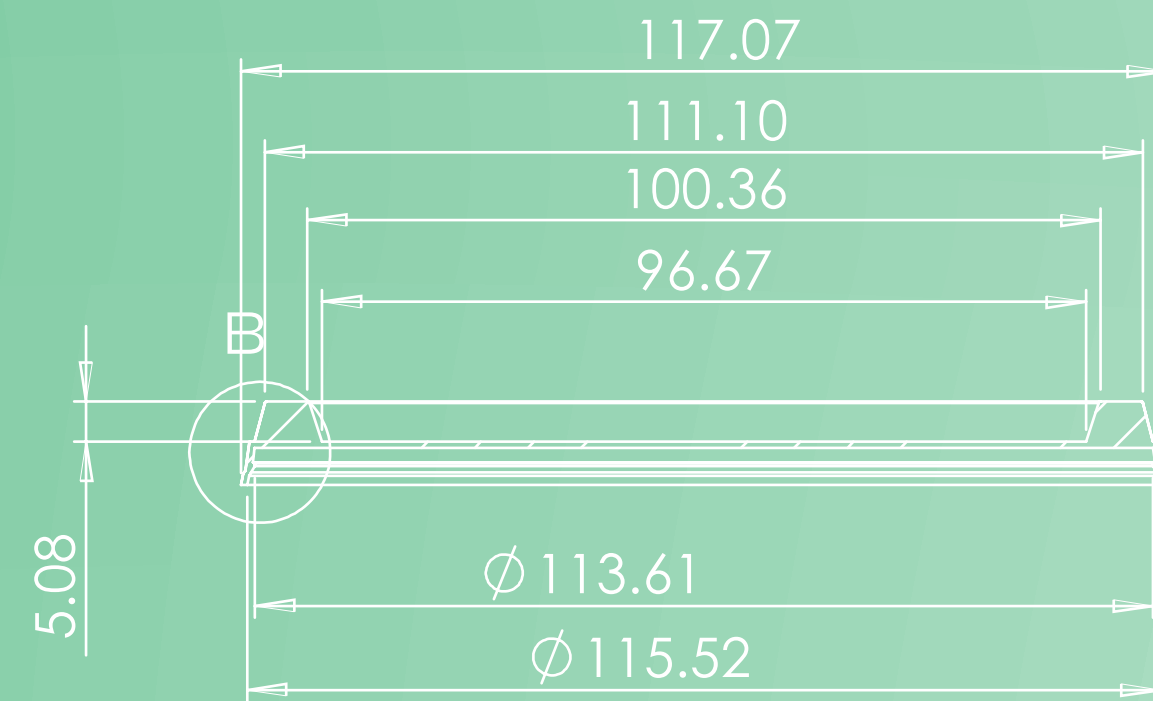




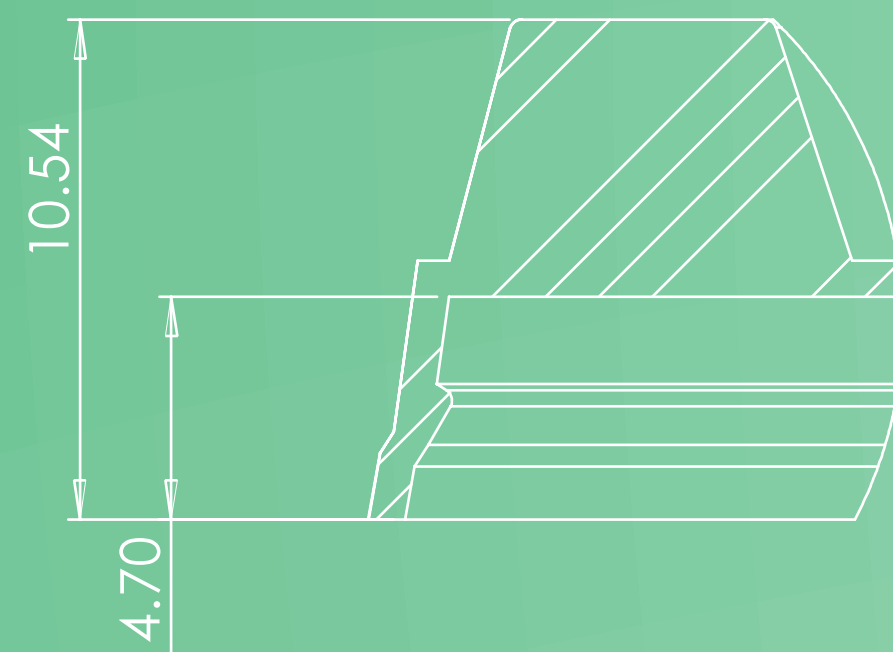
SOBRE TAPA CONTENEDOR MEDIO PLANO 500GR.

FICHA TÉCNICA

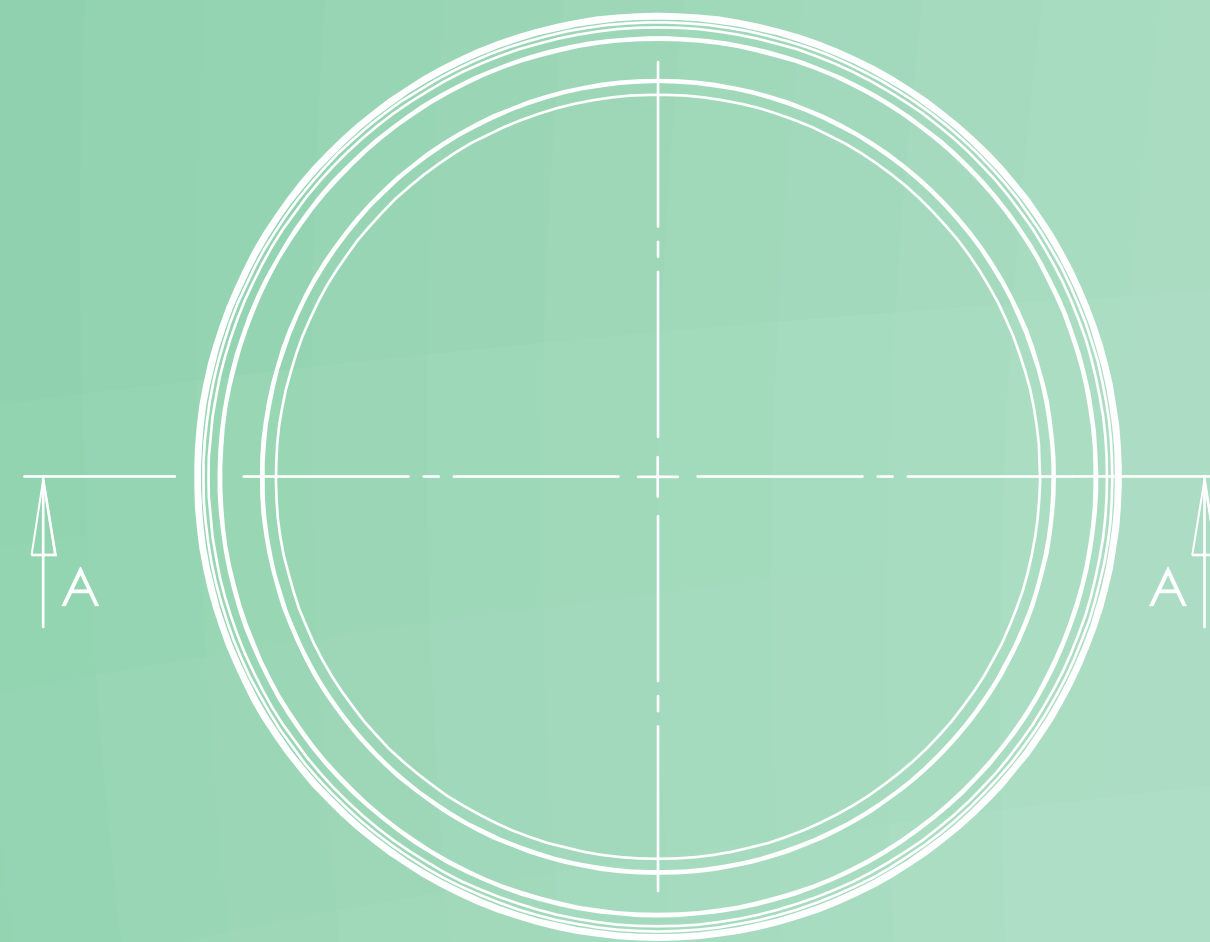
CONTENEDOR PET	500 ml.
MATERIAL	PET



SECCIÓN A-A
ESCALA 1 : 1.5



DETALLE B
ESCALA 4 : 1

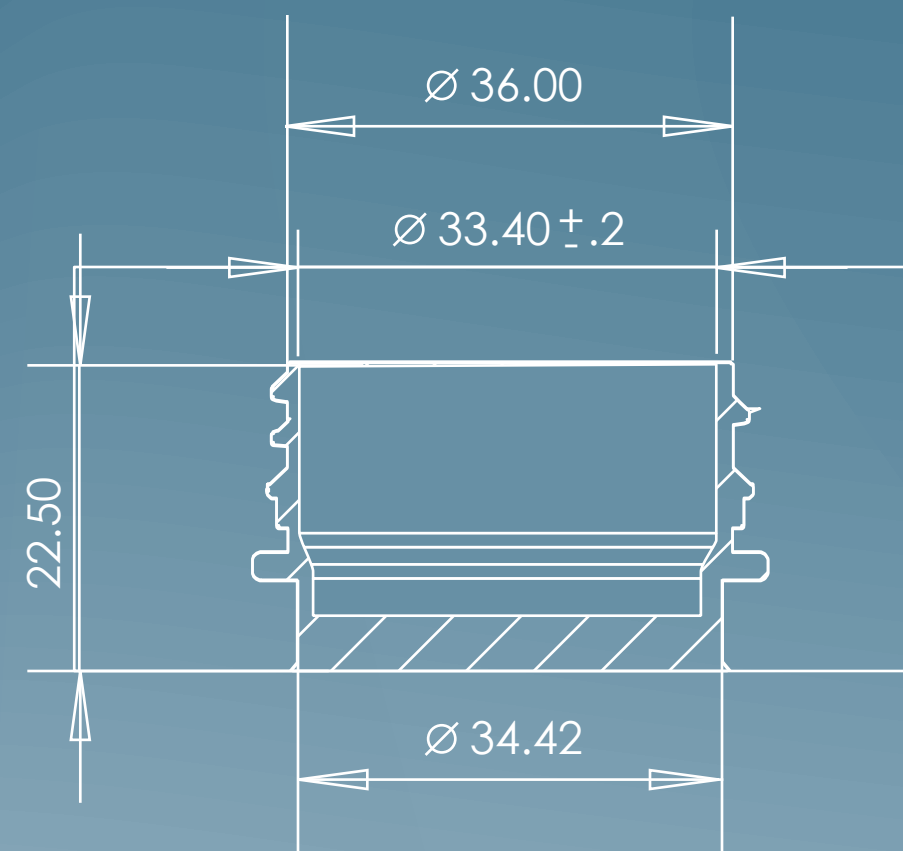




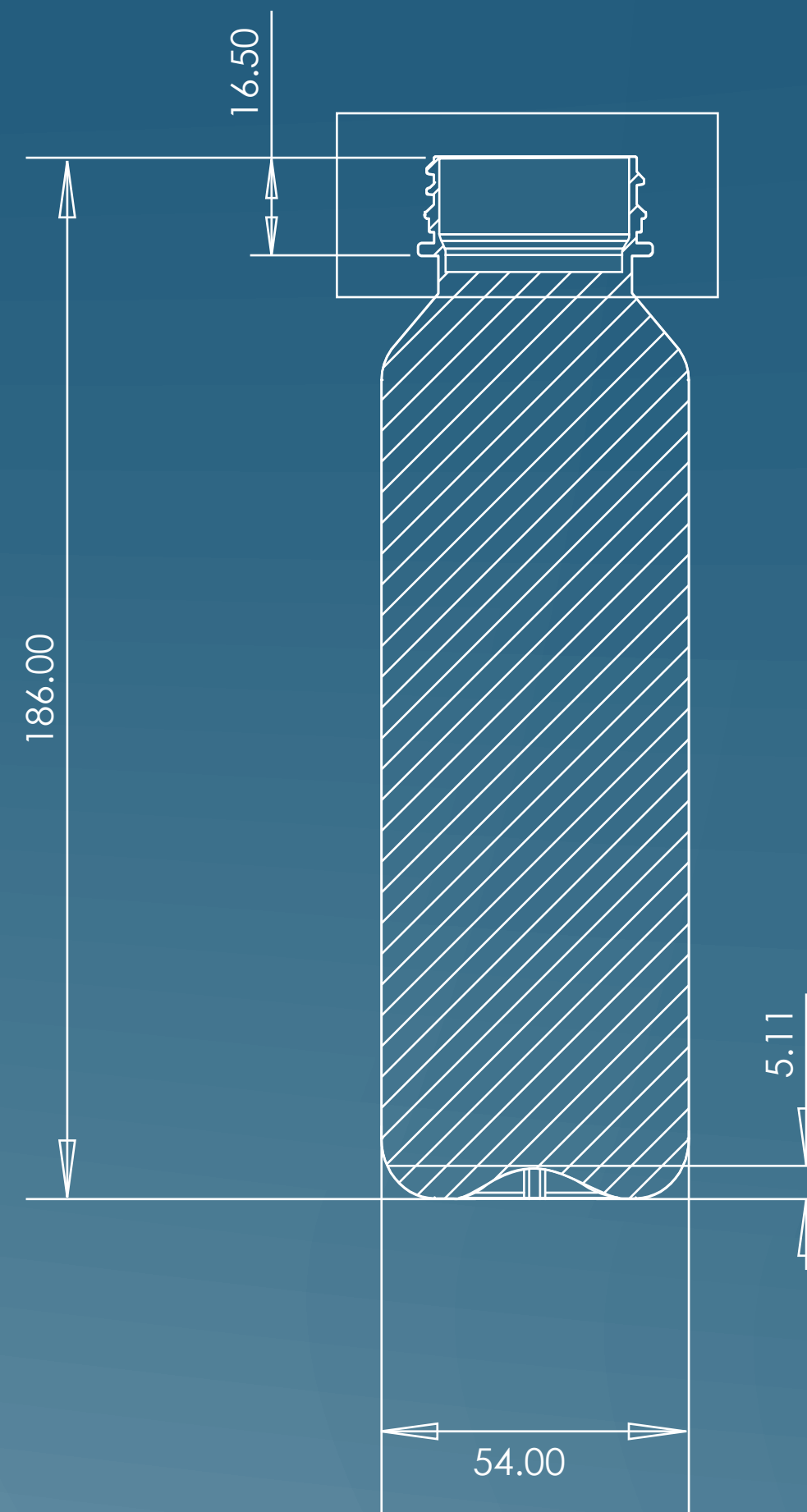
BOTELLA BOSTON 355ML.

FICHA TÉCNICA

BOTELLA BOSTON	355 ml.
TIPO CUELLO	LARGO
ROSCA	38 mm.
MATERIAL	PET



DETALLE B



SECCIÓN A-A

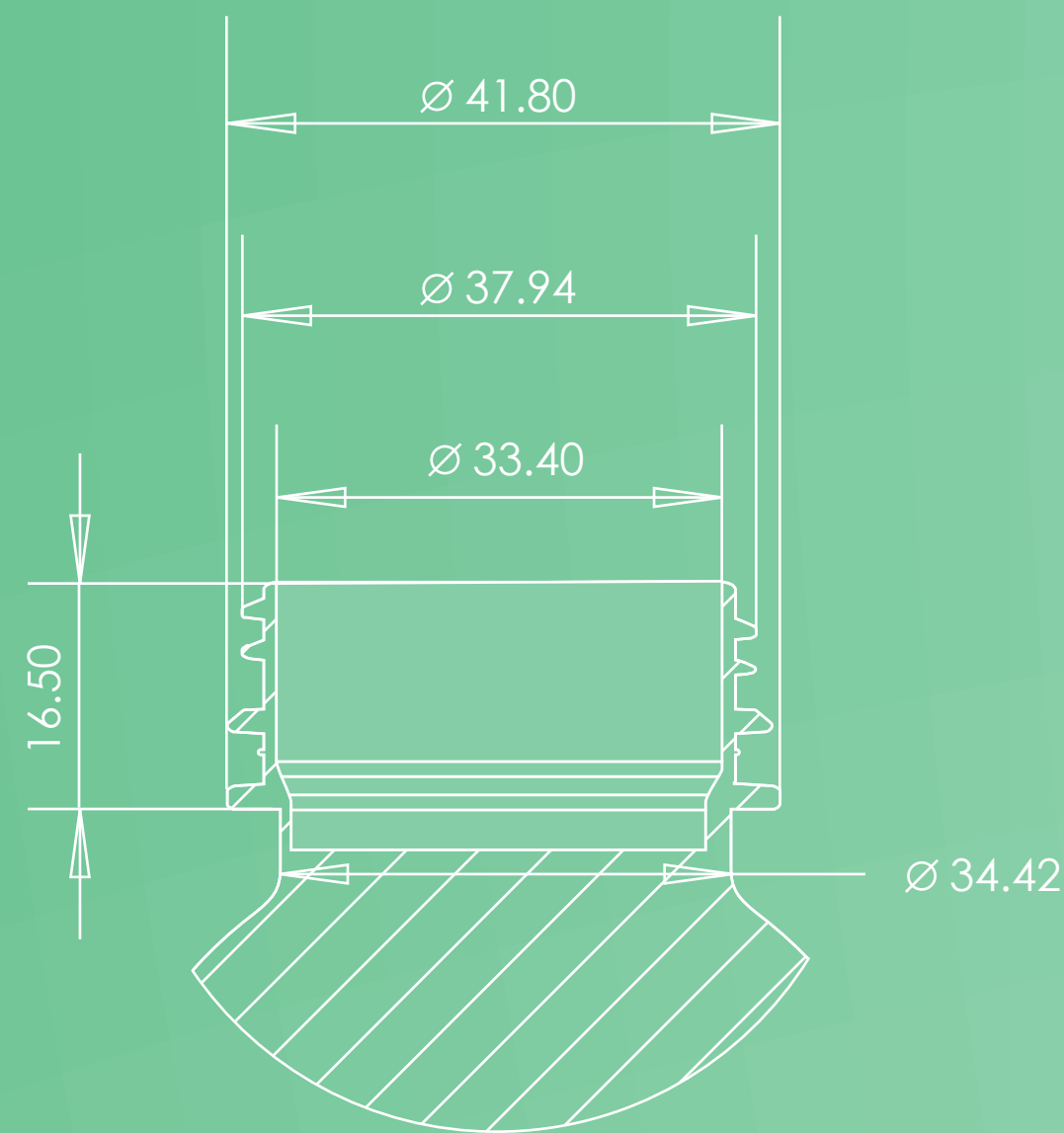




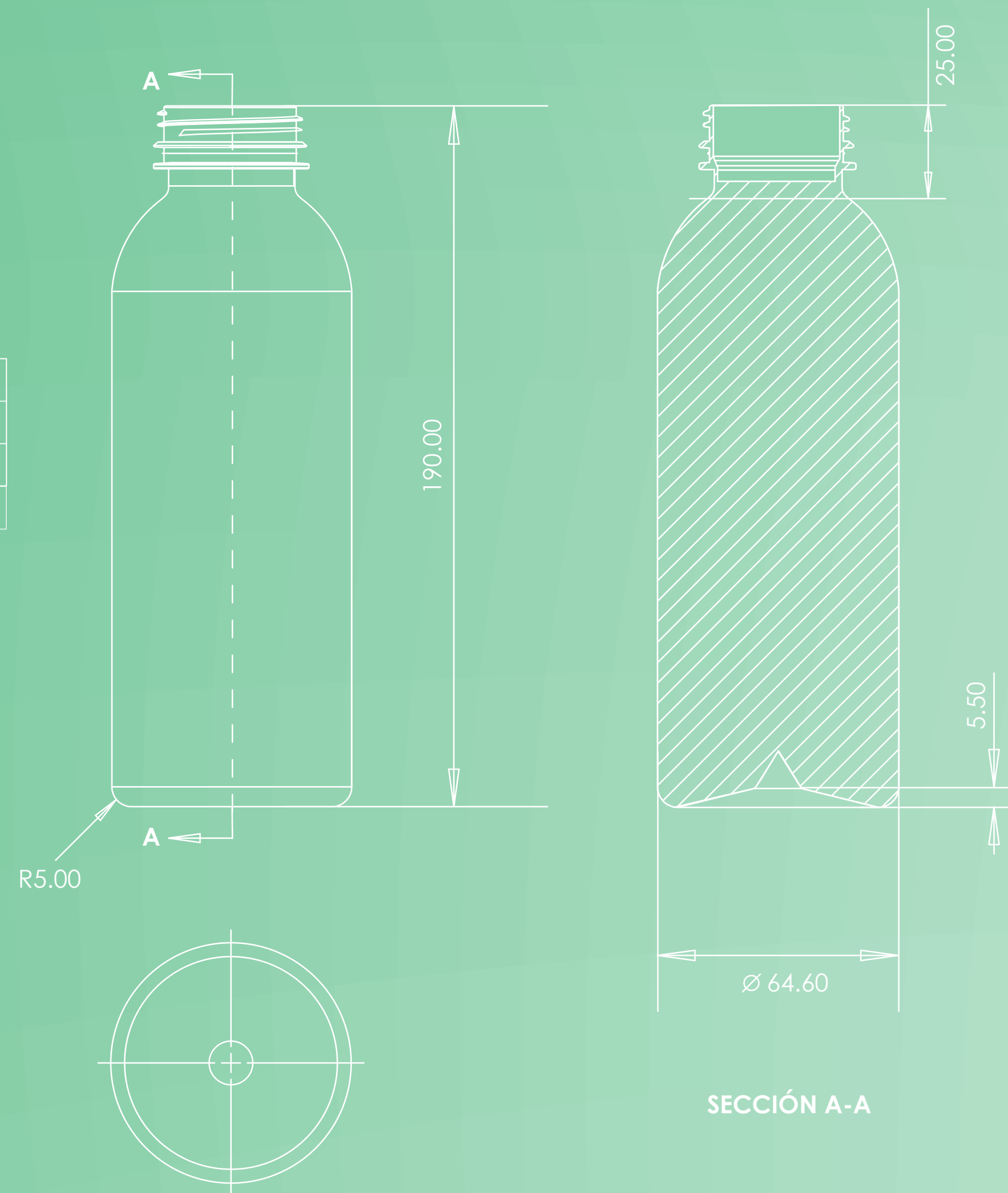
BOTELLA BOSTON 500ML.

FICHA TÉCNICA

BOTELLA BOSTON	500 ml.
TIPO CUELLO	LARGO
ROSCA	38 mm.
MATERIAL	PET



DETALLE B



SECCIÓN A-A



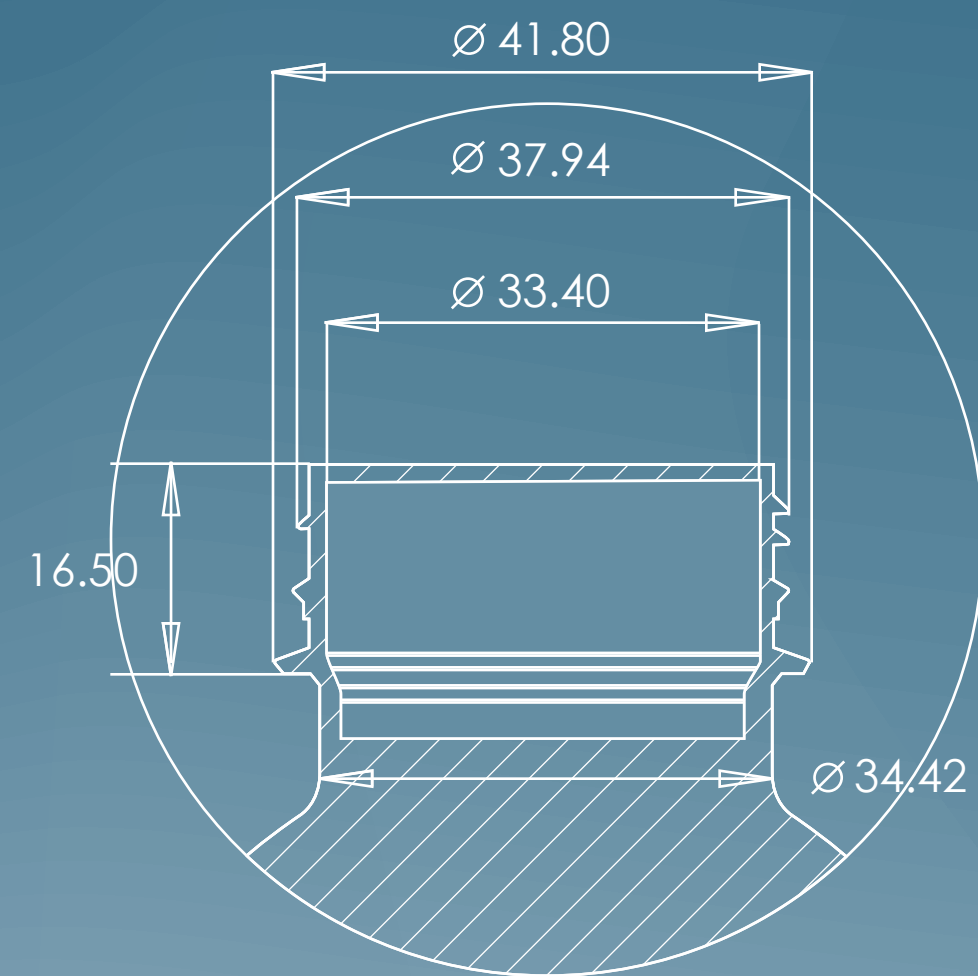


BOTELLA BOSTON

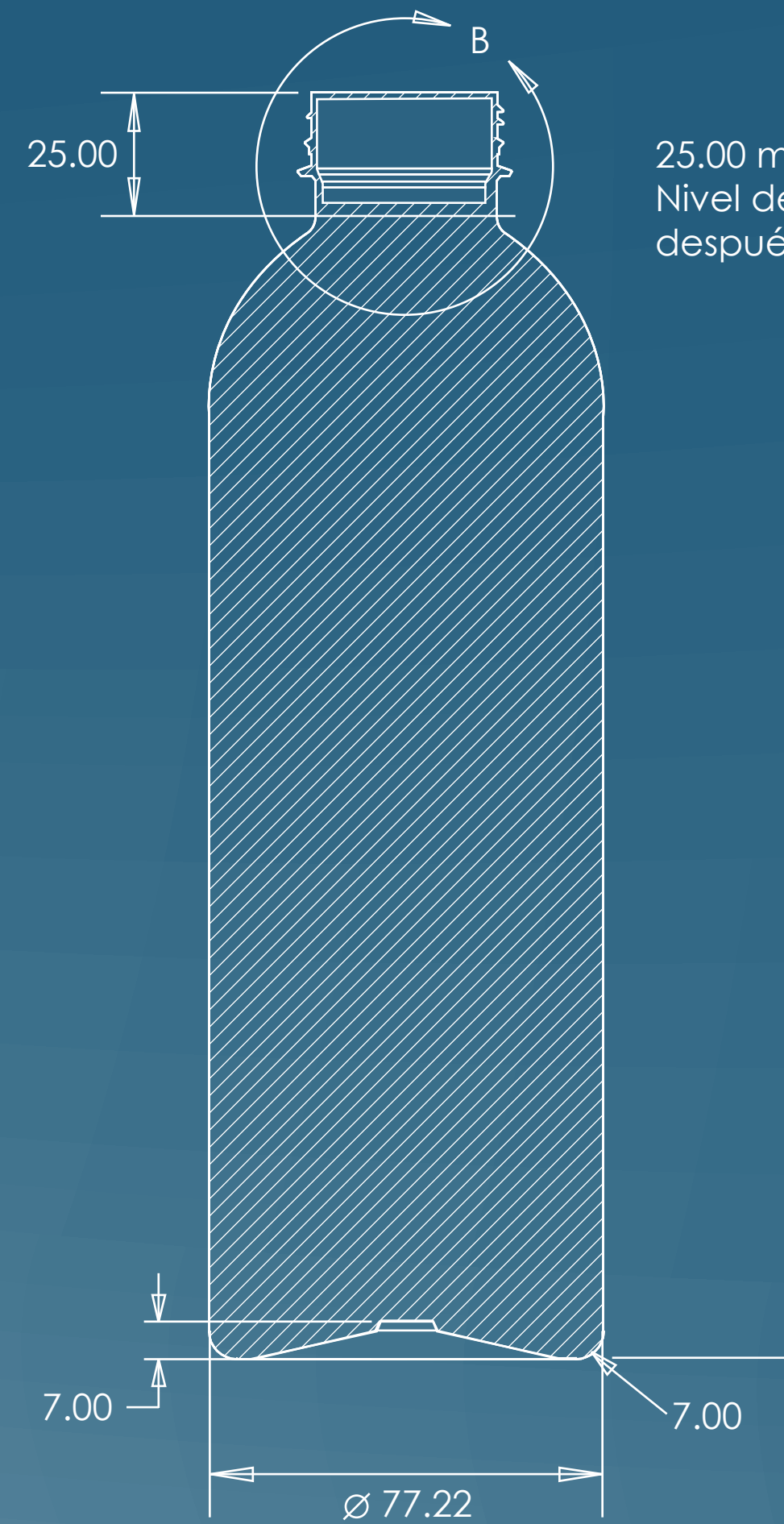
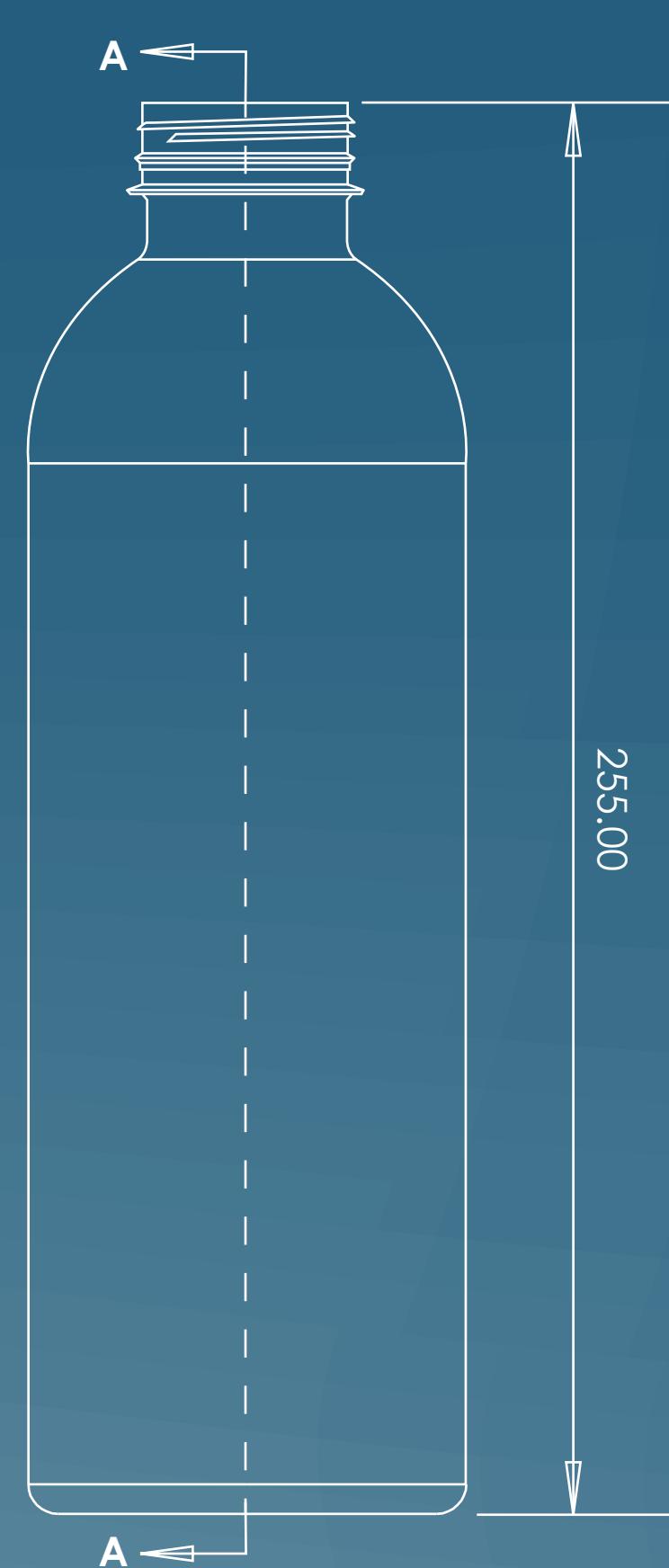
1 L.

FICHA TÉCNICA

BOTELLA BOSTON	1 L.
TIPO CUELLO	LARGO
ROSCA	38 mm.
MATERIAL	PET



DETALLE B



25.00 mm
Nivel de llenado calculado
después de 72 horas.

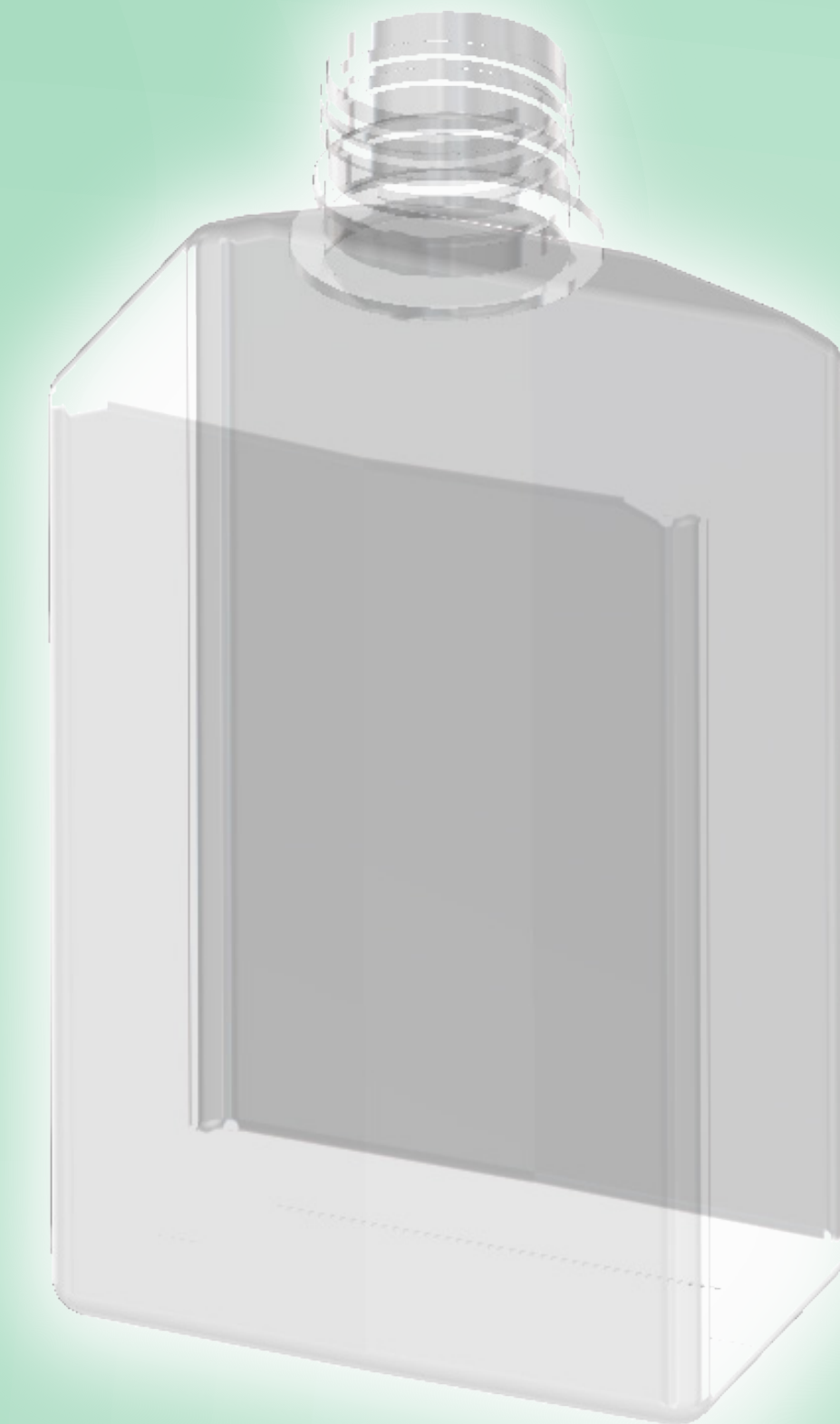
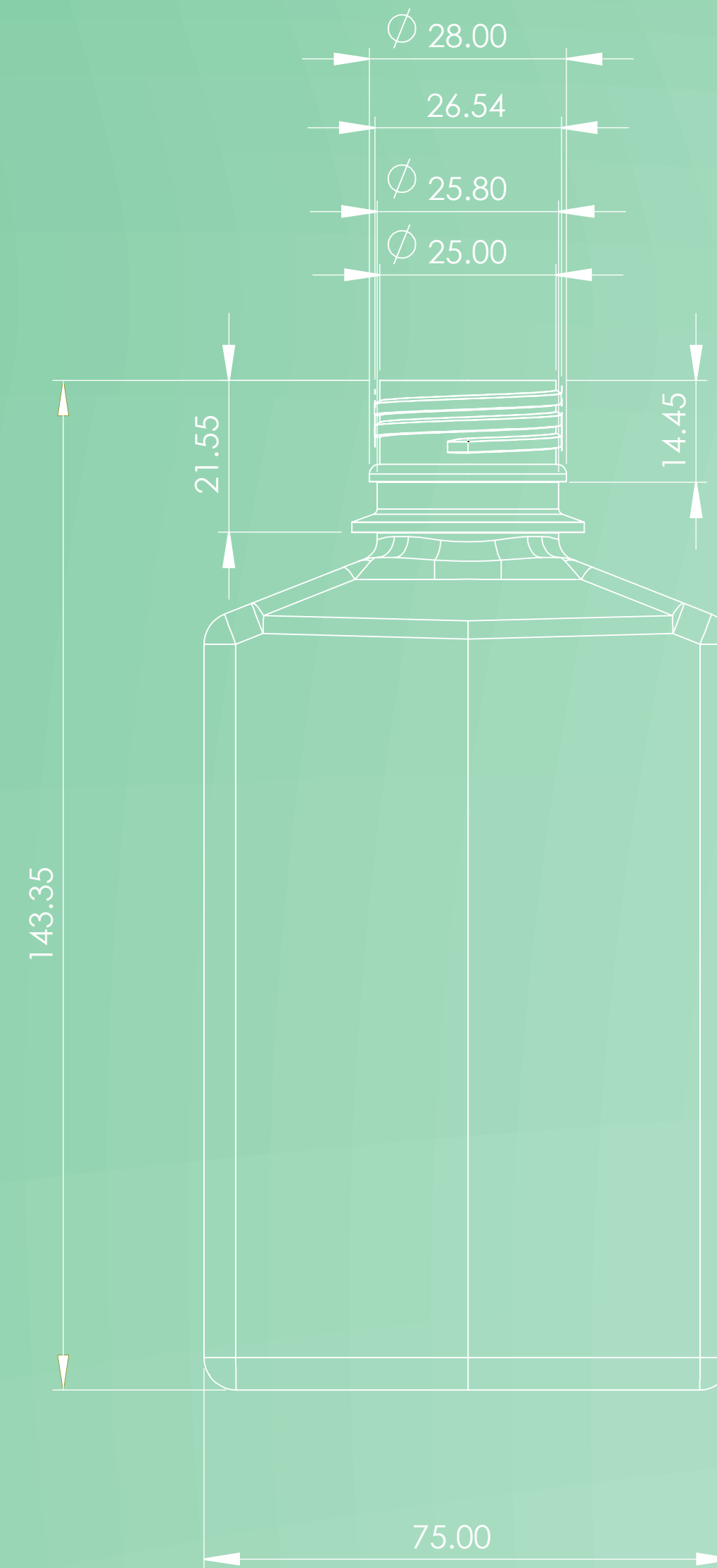




MOLDES PERSONALIZADOS

Ponemos a disposición de todas las empresas nuestro servicio de diseño y fabricación de moldes para inyección y soplado de plástico, hechos a la medida de las necesidades de tu marca y de tu producto.

Cada molde está diseñado con base en tus ideas y nuestra experiencia, posteriormente nuestro personal experto se encargará de la fabricación del producto con la calidad premium que nos distingue.



H

humane

P L Á S T I C O S